

## Development of RiverWare Model of the Rio Grande Flow for Flood Control and Water Operations Planning

Dr. Z. Sheng, Dr. A. Michelsen and Dr. B. Mohanty, Texas AgriLife Research, TAMU System  
Dr. P. J. King, Dr. C. Brown, Dr. B. Creel and Dr. K. Wood, New Mexico WRRI, NMSU  
Dr. A. Granados, Universidad Autonmas Ciudad Juarez  
M. Sidlow and A. Fitzner, U.S. Army Corps of Engineers



Support Provided by: U.S. Army Corps of Engineers, USDA-NIFA, Texas AgriLife Research, Texas Water Resources Institute, New Mexico State University and New Mexico Water Resources Research Institute, Paso del Norte Watershed Council

### BACKGROUND

The U.S. Army Corps of Engineers in collaboration with the New Mexico Interstate Stream Commission, U.S. Bureau of Reclamation, U. S. Geological Survey, and U.S. Bureau of Indian Affairs, with cooperation from numerous other Federal, states, local and other agencies, have collaborated to develop the Upper Rio Grande Water Operations Model (URGWOM), using RiverWare® software. The model simulates the river flow and water operation in the Rio Grande basin from the Colorado–New Mexico state-line to just above Fort Quitman, Texas, 120 miles southeast of El Paso. A water quality component will also be included in future development of URGWOM that will be useful for making management decisions to maintain optimal river ecosystem health while meeting downstream water delivery requirements. TAMU, NMSU and the UACJ team are developing the RiverWare model to simulate the river flow for the reaches between the Elephant Butte reservoir and Fort Quitman.

### OBJECTIVES AND METHODS

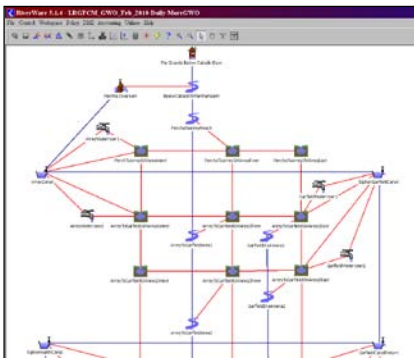
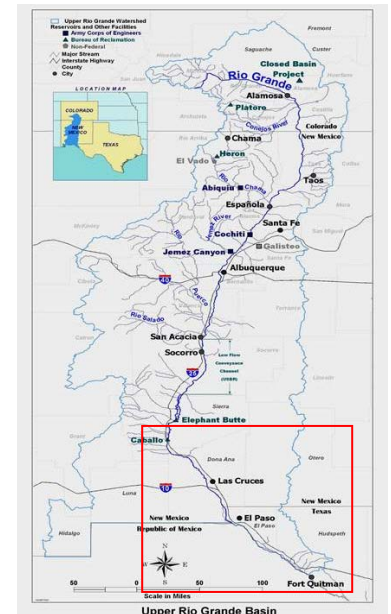


Illustration of RiverWare model node and flow configuration

- Collect and compile necessary data and analyses to expand the URGWOM RiverWare® model for water operations and flood control planning in the Rincon Valley and Mesilla Basin
- Collect and compile necessary data and analyses to expand the URGWOM RiverWare® model to simulate flows and water operations planning for the El Paso lower valley and District 009 in Mexico.
- Integrate the RiverWare model to simulate river flow and water operations scenarios for the entire study area (from Caballo Dam in New Mexico to Fort Quitman in TX).
- Enhance coordinated water resources database by incorporating model input data and simulation data into the PDNWC database and GIS website.



Upper Rio Grande Basin and Study Area

### PROGRAM RESULTS AND BENEFITS

- Workshops and training for water resources stakeholders are being held to demonstrate RiverWare modeling and use.
- Access to surface water flow and water quality data within the Rio Grande Project Watershed, and hydrologic simulations in this project will benefit regional stakeholders in many ways: better controlling flood surges with more responsive flood and water quality management and mitigation strategies; providing Federal Emergency Management Agency information in its disaster response plans and helping irrigation districts, water utilities, and federal water operators to more effectively and efficiently manage water deliveries.
- Two technical reports have been published. These are available at <http://www.pdnwc.org> and <http://twri.tamu.edu/reports>.



Texas AgriLife Research Center at El Paso  
Texas A&M University System  
1380 A&M Circle, El Paso, Texas 79927  
Phone: (915) 859-9111, Fax: (915) 859-1078  
<http://el Paso.tamu.edu/Research> 3/25/2011

